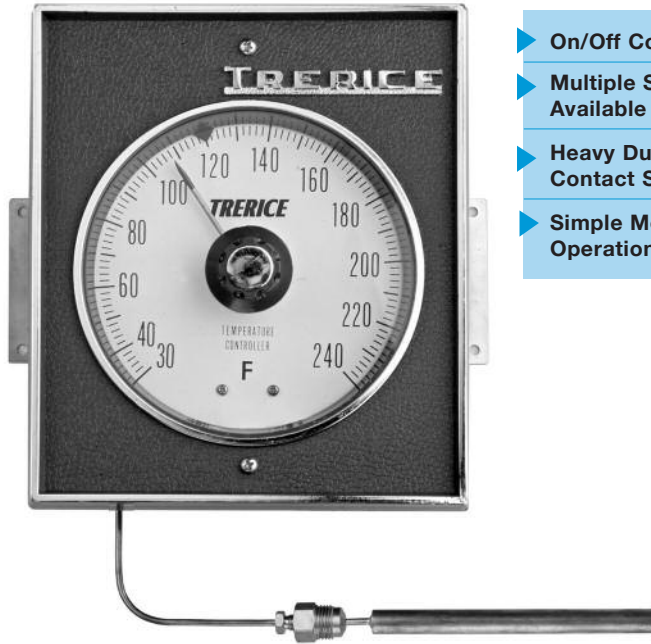


L84000 Series Electric Contact Controller

CONTROLLERS



- ▶ On/Off Control
- ▶ Multiple Switches Available
- ▶ Heavy Duty Contact Switches
- ▶ Simple Mechanical Operation

L84000 shown

The Trerice **L84000 Series** Electric Contact Controller is designed for applications that require the opening and closing of electric solenoid valves, heaters, and other electrical devices. It is a rugged and versatile controller, capable of producing "On/Off" control over a wide range of temperatures from -100°F to 700°F. This controller includes a setting adjustment knob and one or more SPDT electric contact switches.

For applications where the process media may be corrosive or contained under pressure, the use of a thermowell is required to prevent damage to the controller and facilitate its removal from the process. (Refer to page 220)

Specifications

Models

- L84000** (1 switch)
- L84100** (2 switch)
- L84200** (3 switch)
- L84300** (4 switch)

Control On/Off, via electric contact switch

Dial Size 6"

Movement Stainless Steel and Brass

Case Blue ABS plastic, panel mounted

Cover Blue ABS plastic, close cell rubber gasketed

Window Acrylic

Pointer Brass

Switch Ratings

L84000, L84100:
10 A @ 125/250 VAC,
0.25 A @ 120 Vdc

L84200, L84300:
5 A @ 250 VAC,
5 A res./3 A ind. @ 28 Vdc

Dial face Aluminum, white background with black graduations and markings

Accuracy ± One Scale Division

Approximate Shipping Weight

9.0 lbs [4.09 kg]

HOW TO ORDER

Sample Order Number: **L 84100 145 B10 10 W02**

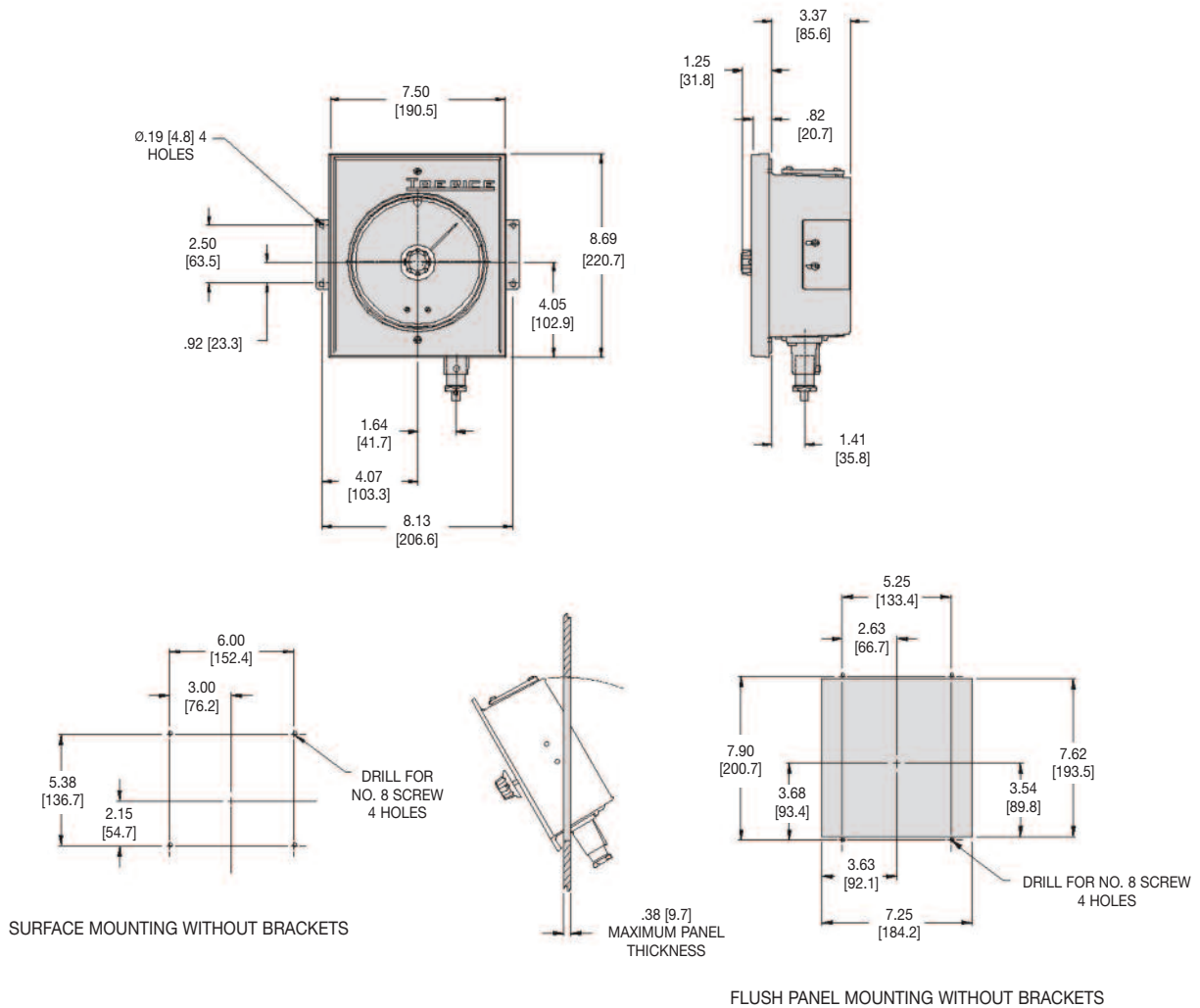
Actuation	Model	Specific Range	Thermal System	Capillary Length	Thermowell
L Liquid	84000 1 Switch	Refer to Standard Ranges (page 217)	Refer to Thermal System Selection (pages 218-219)	05 5 Feet	W02 Brass W05 304 SS W06 316 SS
	84100 2 Switch			10 10 Feet	
	84200 3 Switch			15 15 Feet	
	84300 4 Switch			20 20 Feet	W12 Brass W15 304 SS W16 316 SS
	20 Feet Maximum				

L84000 Series

Electric Contact Controller

All dimensions are nominal. Dimensions in [] are in millimeters

CONTROLLERS



Standard Ranges

Fahrenheit Ranges		Celsius Ranges		Fahrenheit & Celsius Ranges	
Range Code	Range	Range Code	Range	Range Code	Range
105	-100° to 100°F	225	-70° to 40°C	325	-30° to 170°F & -35° to 75°C
125	-30° to 170°F	245	-35° to 75°C	345	50° to 350°F & 10° to 175°C
145	0° to 200°F	265	0° to 115°C	355	50° to 700°F & 10° to 370°C
165	30° to 240°F	295	10° to 175°C		
175	50° to 350°F	305	10° to 370°C		
195	50° to 700°F				
215	200° to 400°F				