

# In-Line Threaded Diaphragm Seals

DIAPHRAGM SEALS



M535 shown

- ▶ Clean-out Design
- ▶ Threaded or Socket-Welded Process Connection

The Trerice **In-Line Threaded Diaphragm Seal** is furnished with a Clean-out design in threaded or socket-welded pipe connections of 1/4" through 1". Since the diaphragm seal is installed "in line" to the system piping, the process media will flow through the seal, eliminating the "dead-end" area found on threaded or flanged seals. Available diaphragm choices include: Teflon (T), Viton (V), Removable Metal (M) and Welded Metal (W).

**Selection of the proper diaphragm seal is the sole responsibility of the user. Temperature and pressure limitations must be considered. Please refer to the Diaphragm Seal Design & Operation Section of this catalog. Improper application may cause failure of the seal, resulting in possible personal injury or property damage.**

For correct use and application of all diaphragm seals, please refer to Diaphragm Seal Standard ASME B40.2.

## SPECIFICATIONS

Style	Available Diaphragm Types*	Diaphragm Size	Process Connection	Clean-out Design	1/4 NPT Flushing Connection
535	M, T, V, W	Standard	Threaded	Yes	No
540	M, T, V, W	Standard	Socket-Welded	Yes	No
635	M, T, W	Large	Threaded	Yes	No
640	M, T, W	Large	Socket-Welded	Yes	No

\*M = Removable Metal, T = Teflon, V = Viton, W = Welded Metal

Note: Due to the variety of available diaphragm seal configurations and materials, it is not possible to list each weight in this catalog. Please consult factory.

## HOW TO ORDER

Sample Order Number: **T 5 35 06 T T CC**

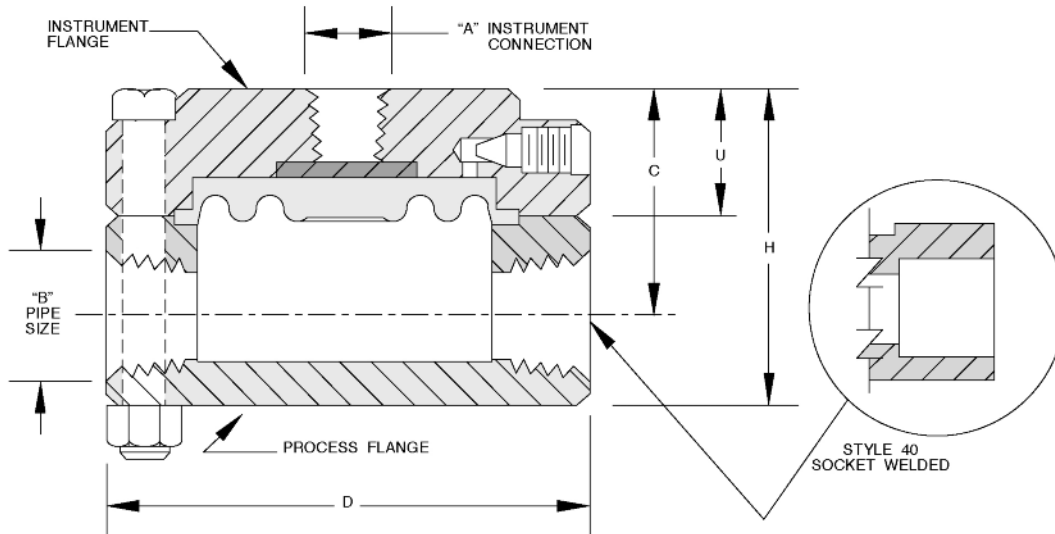
Diaphragm Type	Diaphragm Size	Style	Connection Size	Diaphragm Material	Process Housing Material	Instrument Housing & Bolt Material
M Metal T Teflon V Viton** W Welded	5 Standard 6 Large	35 Threaded 40 Socket-Welded	See Connection Sizes	See Diaphragm Materials	See Process Housing Materials	CC Carbon Steel SS 316 Stainless Steel

\*\*Diaphragm Type V available only with Diaphragm Size 5.

See Sizes and Materials Table

# In-Line Threaded Diaphragm Seals

All dimensions are nominal. Dimensions in [ ] are in millimeters.



DIAPHRAGM SEALS

Diaphragm Type and Size	A	B	H	U	C	D
M, T, W 5 Series	1/4, 1/2 NPT as specified	1/4 NPT	1.63 [41]	0.88 [22]	1.24 [32]	3.25 [83]
		1/2 NPT	2.13 [54]	0.88 [22]	1.50 [38]	3.25 [83]
		3/4 NPT	2.38 [60]	0.88 [22]	1.63 [41]	3.25 [83]
		1 NPT	2.63 [67]	0.88 [22]	1.75 [44]	3.25 [83]
V 5 Series	1/4, 1/2 NPT as specified	1/4 NPT	1.63 [41]	1.00 [25]	1.24 [32]	3.25 [83]
		1/2 NPT	2.13 [54]	1.00 [25]	1.50 [38]	3.25 [83]
		3/4 NPT	2.38 [60]	1.00 [25]	1.63 [41]	3.25 [83]
		1 NPT	2.63 [67]	1.00 [25]	1.75 [44]	3.25 [83]
M, T, W 6 Series	1/4, 1/2 NPT as specified	1/4 NPT	1.63 [41]	0.88 [22]	1.24 [32]	4.00 [102]
		1/2 NPT	2.13 [54]	0.88 [22]	1.50 [38]	4.00 [102]
		3/4 NPT	2.38 [60]	0.88 [22]	1.63 [41]	4.00 [102]
		1 NPT	2.63 [67]	0.88 [22]	1.75 [44]	4.00 [102]

## Sizes and Materials

Connection Sizes			Diaphragm Materials		Process Housing Materials	
Code	Instrument Connection (NPT)	Process Connection	Code	Material	Code	Material
01	1/4	1/4" NPT/SW	D	Carpenter 20	C	Steel
02	1/2	1/4" NPT/SW	F	304 Stainless Steel*	D	Carpenter 20
03	1/4	1/2" NPT/SW	G	Hastelloy B	F	304 Stainless Steel
04	1/2	1/2" NPT/SW	H	Hastelloy C-276	G	Hastelloy B
05	1/4	3/4" NPT/SW	M	Monel	H	Hastelloy C-276
06	1/2	3/4" NPT/SW	N	Nickel	M	Monel
07	1/4	1" NPT/SW	S	316L Stainless Steel	N	Nickel
08	1/2	1" NPT/SW	T	Teflon	P	Polypropylene
			U	Tantalum	S	316L Stainless Steel
			V	Viton**	T	Teflon
					Z	PVC

\* 304 Stainless Steel diaphragm not available with Diaphragm Size 6.

\*\* Viton Diaphragm available only with Diaphragm Size 5.