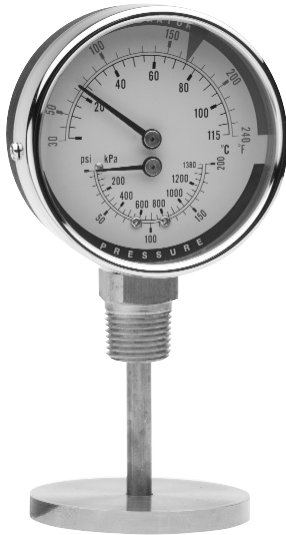


Tridicator

2 1/2" & 3 1/2" • Steel Case



- ▶ 2 1/2" & 3 1/2" Dial Size
- ▶ 3% Temperature Accuracy
- ▶ 3-2-3% Pressure Accuracy

Trerice Tridicators are designed specifically for use with hot water boilers. Because Tridicators provide both temperature and pressure measurement, only one access point to the boiler is required. Available in 2 1/2" and 3 1/2" dial sizes with rear and bottom connections, there is a Trerice Tridicator to suit your needs.

Specifications

Models	Dial Sizes	Case Style
140	2 1/2" (68mm)	Rear Connection
142	2 1/2" (68mm)	Rear Connection with lag
144	3 1/2" (82mm)	Bottom Connection
146	3 1/2" (82mm)	Rear Connection

Wetted Parts Bronze tube, brass socket

Connection 2 1/2": 1/4 NPT
3 1/2": 1/2 NPT

Case Material Steel, black painted

Window 2 1/2": Acrylic
3 1/2": Glass

Pointers Steel, black painted

Ring 2 1/2": Plastic, screwed on
3 1/2": Steel

Temperature Accuracy 3%, Full Scale

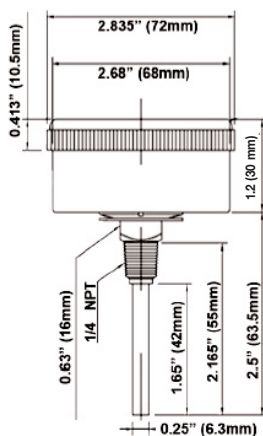
Pressure Accuracy 3-2-3% Grade B

Maximum Operating Pressure 2/3 of full scale range

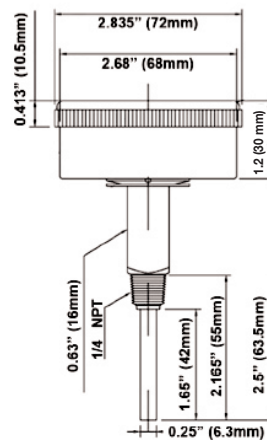
Approximate Shipping Weight

2 1/2": 0.3 lbs [0.14 kg]
3 1/2": 0.55 lbs [0.25 kg]

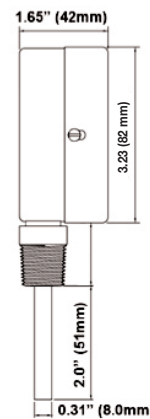
Part Number	Dial Size	Connection	Range
PTC14001	2 1/2" (68mm)	1/4 NPT Rear	30° to 240° F/C & 0 to 75 psi/kPa
PTC14007	2 1/2" (68mm)	1/4 NPT Rear	60° to 320° F/C & 0 to 75 psi/kPa
PTC14201	2 1/2" (68mm)	1/4 NPT Rear w/lag	30° to 240° F/C & 0 to 75 psi/kPa
PTC14401	3 1/2" (82mm)	1/2 NPT Bottom	30° to 240° F/C & 0 to 75 psi/kPa
PTC14403	3 1/2" (82mm)	1/2 NPT Bottom	30° to 240° F/C & 0 to 100 psi/kPa
PTC14405	3 1/2" (82mm)	1/2 NPT Bottom	30° to 240° F/C & 0 to 200 psi/kPa
PTC14601	3 1/2" (82mm)	1/2 NPT Rear	30° to 240° F/C & 0 to 75 psi/kPa
PTC14603	3 1/2" (82mm)	1/2 NPT Rear	30° to 240° F/C & 0 to 100 psi/kPa
PTC14605	3 1/2" (82mm)	1/2 NPT Rear	30° to 240° F/C & 0 to 200 psi/kPa



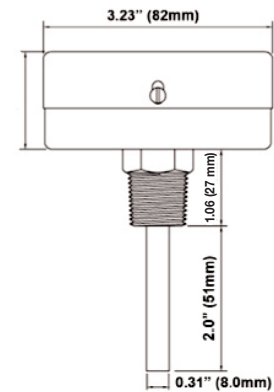
Model 140



Model 142



Model 144



Model 146

BIMETAL THERMOMETERS

